

# BRIGHTSIGN AU335

## ULTRA-AFFORDABLE, HIGH QUALITY AUDIO PLAYER

The BrightSign AU335 delivers quality, high-bandwidth audio including the latest sound technologies on an ultra-affordable, cloud-based platform. Its ARC and eARC support allow the AU335 to distribute up to three zones of audio to soundbars and AV receivers that offer high bandwidth, 24-bit sound including Dolby Atmos®. Interactive controls through USB, GPIO, and Ethernet will engage your audience, and CEC command support simplifies the solution. Background music distribution is also supported. The AU335 can synchronize with additional BrightSign players and control lighting and other devices to create unique and immersive experiences. Flawless, quality audio experiences are now a reality for any application with this low-cost platform that is easy to deploy and designed with BrightSign's signature reliability.



### BrightSign AU335

#### Digital Audio Player



- Distributes quality, high-bandwidth audio including the latest sound technologies to ARC and eARC soundbars & AV receivers
  - Dolby Atmos, Dolby Audio™ and PCM audio
- Supports up to three audio zones routed to the ARC and eARC or stereo analog audio outputs
- Supports interactive devices such as buttons, proximity sensors and more via USB, GPIO, Ethernet
  - USB also operates in host mode to update firmware on connected devices
- Controls soundbar volume and input switching via CEC commands
- Distributes background music to your venue
- Includes free Control Cloud subscription to BSN.cloud for access to real time player health and controls
- Supports presentation authoring through free BrightAuthor:connected, BrightScript, JavaScript, and node applications or your choice of an integrated CMS solution

## Features



## SPECIFICATIONS

MODEL	AU335
MEDIA FORMATS	
Audio decoding: WAV, AAC, TS, MP2, MP3, MP4, MOV, MP2TS	X
Audio pass through: EAC3, AC3	X
Scripting: JavaScript & Node.js	X
HARDWARE INTERFACES	
Locking Power Connector	X
External micro SD Slot (SDHC and SDXC); SDHC Storage via SDXC (up to 2TB)	X
USB High Speed Host Port (also supports content updates)	X (Type C)
12-pin Phoenix GPIO port with 8 bi-directional GPIOs	X
3.5mm Audio Out (analog)	X
ARC/eARC	X (Micro-HDMI)
Ethernet 100baseT	X
Status LED	X
Reset and Services Button	X
Real Time Clock	X
FEATURES	
High Bandwidth Audio: supports up to 24-bit lossless audio including Dolby Atmos support	X
Zones: plays up to three audio zones to ARC/eARC and analog audio outputs	X
Multi-Player Sync: synchronized playback across multiple BrightSign players	X
Interactivity: connect virtually any interactive device to a multitude of ports	X (USB, GPIO, Ethernet)

MODEL	AU335
CEC Commands: to control soundbar volume and input switching	X
Tagging: Brightsign Network users can assign media and player tags for highly targeted content distribution	X
Networking: update and schedule audio presentations and manage your player network	X
B-deploy: A setup feature to deploy many players at once	X
SOFTWARE	
Free BrightAuthor:connected Software	X
BSN.cloud Networking Options	X
ACCESSORIES	
USB Button Pads	X
Wireless Module	
MicroSD Class 10 Cards (various capacities)	X
MISCELLANEOUS	
Dimensions (W x H x D)	173.4mm X 27.9mm X 99.9mm
Weight	13.3 oz
Power	12V / 3A (36 Watts)
Multi-Country Power & Regulatory Approvals	X
Built-in Wall Mounting Brackets	X
1 year warranty, parts and labor*	X

\*2 year warranty, parts and labor, for units shipped from an EU or UK distribution center and to an EU or UK address.

# BRIGHTSIGN LS

## SIGNATURE BRIGHTSIGN RELIABILITY. AFFORDABLE ENTRY-LEVEL PERFORMANCE.

BrightSign's fully featured commercial-grade player provides a far superior alternative to the consumer devices sometimes chosen for price-sensitive installations. Based on the award-winning BrightSign HD platform, BrightSign LS delivers our signature reliability and affordability. A robust feature set, including H.265 and Full HD video decoding, entry-level HTML5 performance, USB 2.0 (type C), and networking, is provided in a very small form factor.



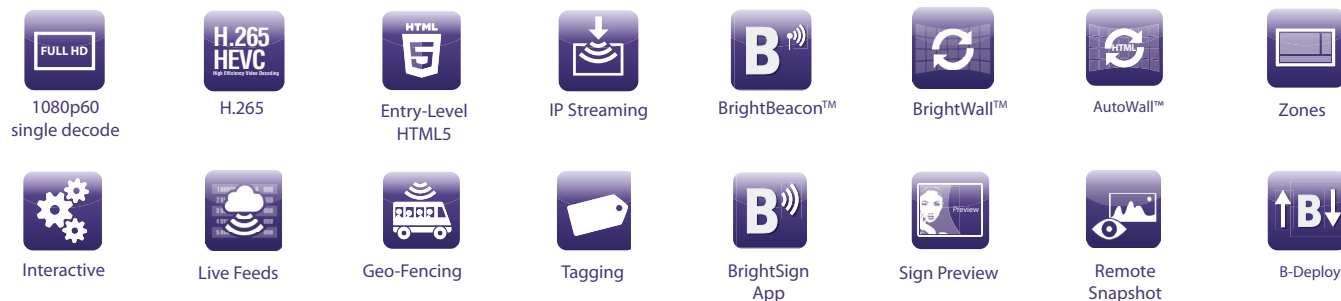
### BrightSign LS424

#### Entry-Level Media Player



The small form, commercial-grade BrightSign LS424 is fully featured to run circles around the competition. Network connected and featuring H.265 and 1080p60 video playback, entry-level HTML5 support and USB (type C) interactivity, this model is perfect for simple streaming applications and large deployments of common content.

## Features



## SPECIFICATIONS

MODEL	LS424
VIDEO ENGINE DECODER	
Single 1080p60 video decoding	X
MEDIA FORMATS	
Video Codecs: H.265, H.264(MPEG-4, Part 10), MPEG-2, MPEG-1	X
Video Containers: .ts, .mpg, .vob, .mov, .mp4, .m2ts	X
Images: BMP, JPEG, PNG	X
Audio: MP2, MP3, AAC, and WAV (AC3 is passed through)	X
HTML5	X (Entry-level)
DISPLAY RESOLUTIONS	
1920x1200, 1920x1080x24/25/29.97/30/50/59.94/60p, 1920x1080x50/59.94/60i, 1600x1200x60p, 1440x1050x60/75p, 1440x900x60/75p, 1360x768x60p, 1280x1024x60/75p, 1280x960x60p, 1280x800x60p/75p, 1280x768x60p, 1280x720x50/59.94/60p, 1024x768x60p, 800x600x60/75p, 720x576x50p/50i, 720x480x59.94/60p/60i, 640x480x60p	X
HARDWARE INTERFACES	
External micro SD Slot (SDHC and SDXC); SDHC storage up to 32GB SDXC storage up to 2TB	X
USB High Speed Host Port (also supports content updates)	X (Type C)
Analog Stereo Audio (requires USB adapter cable)	X
HDMI 1.4a Out	X
Ethernet (100 base T)	X
M.2 (E) Keyed Wi-Fi/Bluetooth Connector	X
Wi-Fi External Antenna Connector (optional)	X
Status LEDs	Power
Reset and Service Buttons	X
FEATURES	
H.265 Decoding: smaller file sizes and lower bitrates than H.264	X
HTML5: hardware-accelerated engine that plays modular HTML assets flawlessly alongside high-bandwidth video	X (Entry-level)
BrightBeacon™: 2-way Bluetooth/Beacon communication between mobile devices & signage (requires: wireless/Bluetooth module)	X
BrightWall™: synchronized playback across multiple displays	X
AutoWall™: embraces the power of HTML5 to create unique multimedia video walls	X

MODEL	LS424
Zones: playback multiple content types on a single screen	X
IP Streaming: play streaming media	X
Interactivity: trigger playback from virtually any type of interactive device via a multitude of interactive ports	X (USB, UDP)
Live Feeds: Live Data, Live Text, MRSS, Twitter, Flickr, etc.	X
Tagging: BrightSign Network users can assign media and player tags for highly targeted content distribution	X
BrightSign App: update signs with an iOS device	X
Geo-Fencing: trigger playback based on location (requires USB dongle)	X
Sign Preview: preview presentation playback in BrightAuthor	X
Remote Snapshot: remotely view a snapshot image of the display's playback	X
Networking: update, manage and schedule your signage	X
B-deploy: A setup feature to deploy many players at once	X
SOFTWARE	
Free BrightAuthor Software	X
BrightSign Networking Options	X
ACCESSORIES	
USB Button Pads	X
Wireless/Bluetooth Module	X
MicroSD Class 10 Cards (various capacities)	X
MISCELLANEOUS	
Dimensions (W x H x D)	96.8 x 23.7 x 144.3mm or 3.8 x 0.9 x 5.7 in
Weight	5.6 oz
Power	5V/2A (10 Watts) USB compatible power
Multi-Country Power & Regulatory Approvals	X
Built-in Wall Mounting Brackets	X
1 year warranty, parts and labor	X

# BRIGHTSIGN HD

## AN UPDATED CLASSIC NOW WITH TRUE 4K. MAINSTREAM PERFORMANCE.

BrightSign HD models are ideal for mainstream 4Kp60, Full HD and HTML5 applications that require high reliability and ease of use. All models offer H.265 decoding, HTML5 rendering and Gigabit Ethernet. Robust interactive controls, live content features, BrightWall™ and Mosaic Mode make this set of players a perfect fit for a wide range of applications.



### BrightSign HD224

#### Standard I/O Player

Enjoy flawless 4K and Full HD single video decoding, mainstream HTML5 performance and simultaneous playback from local, networked and streaming sources. Includes the standard I/O package of Gigabit Ethernet, GPIO, and analog/digital audio.



### BrightSign HD1024

#### Expanded I/O Player

All the features of the HD224 plus additional interactive options via USB 2.0 (type A), and serial ports to fully engage your audience.

## Features



4K60p single decode



1080p60 single decode



H.265



Mainstream HTML5



IP Streaming



BrightBeacon™



BrightWall™



AutoWall™



Zones



Interactive



Live Feeds



Geo-Fencing



Tagging



BrightSign App



Sign Preview



Remote Snapshot



B-Deploy



Digital Audio



Mosaic Mode

## SPECIFICATIONS

MODEL	HD224	HD1024
VIDEO ENGINE DECODER		
True 4K@60p video decoding	X	X
Single 4K or 1080p60 video decoding	X	X
MEDIA FORMATS		
Video Codecs for 4K content: H.265/H.264	X	X
Video Containers for 4K H.265/H.264 content: .ts, .mov, .mp4	X	X
Video Codecs for Full HD: H.265, H.264(MPEG-4, Part 10), MPEG-2, MPEG-1	X	X
Video Containers for Full HD: .ts, .mpg, .vob, .mov, .mp4, .m2ts	X	X
Images: BMP, JPEG, PNG	X	X
Audio: MP2, MP3, AAC, and WAV (AC3 is passed through)	X	X
HTML5	X (Mainstream)	
DISPLAY RESOLUTIONS		
4K resolutions: 4096x2160, 3840x2160, 3840x600	X	X
Upscaling to: 3840x2160x24/25/29.97/30p	X	X
1920x1200, 1920x1080x24/25/29.97/30/50/59.94/60p, 1920x1080x50/59.94/60i, 1600x1200x60p, 1440x1050x60/75p, 1440x900x60/75p, 1360x768x60p, 1280x1024x60/75p, 1280x960x60p, 1280x800x60p/75p, 1280x768x60p, 1280x720x50/59.94/60p, 1024x768x60p, 800x600x60/75p, 720x576x50p/50i, 720x480x59.94/60p/60i, 640x480x60p	X	X
HARDWARE INTERFACES		
External micro SD Slot (SDHC and SDXC); SDHC storage up to 32GB SDXC storage up to 2TB	X	X
USB High Speed Host Port (also supports content updates)		X (Type A)
12-pin Phoenix GPIO port with 8 bi-directional GPIOs	X	X
3.5mm RS-232 Serial Port		X
3.5mm IR In/Out	X	X
3.5mm Audio Out (analog -or- SPDIF digital, non-simultaneous)	X	X
HDMI 2.0a Out	X	X
Ethernet	X (Gigabit)	
M.2 (E) Keyed Wi-Fi/Bluetooth Connector	X	X
Wi-Fi External Antenna Connector (optional)	X	X
Status LEDs	Power, Error, Busy, Update	
Reset and Service Buttons	X	X
Real Time Clock	X	X
FEATURES		
H.265 Decoding: smaller file sizes and lower bitrates than H.264	X	X
HTML5: hardware-accelerated engine that plays modular HTML assets flawlessly alongside high-bandwidth video	X (Mainstream)	
BrightBeacon™: 2-way Bluetooth/Beacon communication between mobile devices & signage (requires: wireless/Bluetooth module)	X	X

MODEL	HD224	HD1024
BrightWall™: synchronized playback across multiple displays	X	X
AutoWall™: embraces the power of HTML5 to create unique multimedia video walls	X	X
Zones: playback multiple content types on a single screen	X	X
Mosaic Mode: simultaneously play a multitude of smaller resolution videos that add up to the maximum video resolution of the player	X	X
IP Streaming: play streaming media	X	X
Interactivity: connect virtually any type of interactive device to a multitude of interactive ports	X (GPIO, UDP)	X (GPIO, USB, serial, UDP)
Live Feeds: Live Data, Live Text, MRSS, Twitter, Flickr, etc.	X	X
Tagging: BrightSign Network users can assign media and player tags for highly targeted content distribution	X	X
BrightSign App: update signs with an iOS device	X	X
Geo-Fencing: trigger playback based on location (requires USB dongle)		X
Sign Preview: preview presentation playback in BrightAuthor	X	X
Remote Snapshot: remotely view a snapshot image of the display's playback	X	X
Networking: update, manage and schedule your signage	X	X
B-deploy: A setup feature to deploy many players at once	X	X
Extended Thermal: supports ambient temperatures between 0° & 70° C at 90% max relative humidity, non-condensing	X	X
<b>SOFTWARE</b>		
Free BrightAuthor Software	X	X
BrightSign Networking Options	X	X
<b>ACCESSORIES</b>		
USB Button Pads		X
Wireless/Bluetooth Module	X	X
MicroSD Class 10 Cards (various capacities)	X	X
<b>MISCELLANEOUS</b>		
Dimensions (W x H x D)	159.9 x 22 x 144.2mm or 6.3 x 0.87 x 5.7 in	
Weight	12 oz	
Power	12V / 1.5A (18 Watts)	
Multi-Country Power & Regulatory Approvals	X	X
Built-in Wall Mounting Brackets	X	X
1 year warranty, parts and labor	X	X

# BRIGHTSIGN OPS

## OPS COMPATIBLE DIGITAL SIGNAGE MEDIA PLAYER

Part of the HD Series 3 product family, the HO523 is BrightSign's first OPS compatible digital signage media player. The inside edge features a JAE TX25 plug for connecting to interior display components (video, USB, serial, etc.) The outside edge has industry-standard connectors, as well as specialized device control and feedback interfaces.



### Outside Connectors

- Wi-Fi/Bluetooth module (optional)
- RJ45 Ethernet (10/100/1000)
- Dual USB 2.0 (type A)
- GPIO (6 pins)
- IR (In/Out)
- 3.5mm Audio Out (analog & SPDIF digital)
- RS-232 serial (3.5mm jack)
- MicroSD slot
- Service button
- Reset button

### Features

- HD class performance; runs BrightSign software or compatible CMS partners software
- Flexible design: OPS compatible module and enclosure
- Electrical, mechanical, and thermal compatibility with Intel® OPS specification
- Optional on-board Wi-Fi (IEEE 802.11a/b/g/n)
- H.265/H.264 video decode
- Video output up to 1080p60
- 10-bit video output (using H.265)
- Hardware accelerated HTML5 support

### Inside Connectors

- JAE TX25 plug (OPS compatible)
- M.2 interface (for optional WiFi module)



H.265



1080p60 single decode



Mainstream HTML5



IP Streaming



BrightBeacon™



BrightWall™



AutoWall™



Zones



BrightPlates™



Interactive



Live Feeds



Geo-Fencing



Tagging



BrightSign App



Sign Preview



Remote Snapshot



B-Deploy



IP Streaming Server



Digital Sound



Mosaic Mode

# SPECIFICATIONS

MODEL	H0523
<b>VIDEO ENGINE DECODER</b>	
Single 1080p60 video decoding	X
<b>MEDIA FORMATS</b>	
Video Codecs: H.265, H.264(MPEG-4, Part 10), MPEG-2, MPEG-1	X
Video Containers: .ts, .mpg, .vob, .mov, .mp4, .m2ts, .wmv	X
Images: BMP, JPEG, PNG	X
Audio: MP2, MP3, AAC, and WAV (AC3 is passed through)	X
HTML5	X (Mainstream)
<b>DISPLAY RESOLUTIONS</b>	
1920x1080x24/25/29.92/30/50/59.94/60p, 1920x1080x50/59.94/60i, 1600x1200x60p, 1440x1050x60/75p, 1440x900x60/75p, 1360x768x60p, 1280x1024x60/75p, 1280x960x60p, 1280x800x60p/75p, 1280x768x60p, 1280x720x50/59.94/60p, 1024x768x60p, 800x600x60/75p, 720x576x50p/50i, 720x480x59.94/60p/60i, 640x480x60p	X
<b>HARDWARE INTERFACES</b>	
External micro SD Slot (SDHC and SDXC); SDHC storage up to 32GB SDXC storage up to 2TB	X
2 USB High Speed Host Ports (also supports content updates)	X (Type A)
Phoenix GPIO Port (6-pin bi-directional)	X
3.5mm RS-232 Serial Port	X
3.5mm IR In/Out	X
3.5mm Audio Out (analog & SPDIF digital)	X
HDMI 1.4a Out over JAE connector	X
Ethernet	X (Gigabit)
M.2 (E) Keyed Wi-Fi/Bluetooth Connector (for the Wi-Fi module)	X
Wi-Fi External Antenna Connector (optional)	X
Status LEDs	Power, Error, Busy, Update
Reset and Service Buttons	X
Real Time Clock	X
<b>FEATURES</b>	
H.265 Decoding: smaller file sizes and lower bitrates than H.264	X
HTML5: hardware-accelerated engine that plays modular HTML assets flawlessly alongside high-bandwidth video	X (Mainstream)
BrightBeacon™: 2-way Bluetooth/Beacon communication between mobile devices & signage (requires: wireless/Bluetooth module)	X
BrightWall™: synchronized playback across multiple displays	X

MODEL	H0523
AutoWall™: embraces the power of HTML5 to create unique multimedia video walls	X
Zones: playback multiple content types on a single screen	X
Mosaic Mode: simultaneously play a multitude of smaller resolution videos that add up to the maximum video resolution of the player	X
IP Streaming: play streaming media	X
IP Streaming Server: serve IP streams from local storage	X
Interactivity: connect virtually any type of interactive device to a multitude of interactive ports	X (GPIO, USB, serial, UDP)
Live Feeds: Live Data, Live Text, MRSS, Twitter, Flickr, etc.	X
Tagging: BrightSign Network users can assign media and player tags for highly targeted content distribution	X
BrightSign App: update signs with an iOS device	X
Geo-Fencing: trigger playback based on location (requires USB dongle)	X
Sign Preview: preview presentation playback in BrightAuthor	X
Remote Snapshot: remotely view a snapshot image of the display's playback	X
BrightPlates™: easy template-based sign creation service	X
Networking: update, manage and schedule your signage	X
B-deploy: A setup feature to deploy many players at once	X
Extended Thermal: supports ambient temperatures between 0° & 70° C at 90% max relative humidity, non-condensing	X
<b>SOFTWARE</b>	
Free BrightAuthor Software	X
BrightSign Networking Options	X
<b>ACCESSORIES</b>	
USB Button Pads	X
Wireless/Bluetooth Module	X
MicroSD Class 10 Cards (various capacities)	X
<b>MISCELLANEOUS</b>	
Dimensions (W x H x D)	200 x 30 x 122mm or 7.9 x 1.2 x 4.8 in
Weight	22.9 oz
Power	12V-19V DC nominal
Multi-Country Power & Regulatory Approvals	X
1 year warranty, parts and labor	X

# BRIGHTSIGN XD

## TRUE 4K DOLBY VISION™ AND HDR10\*\*+ PLAYBACK. ADVANCED PERFORMANCE.

BrightSign XD delivers superior technology for advanced applications, including 4K video decoding supporting all the technology standards of the True 4K ecosystem: H.265/H.264-encoded native 4K content at 60fps, Dolby Vision, HDR10+ and HDMI 2.0a for stunning picture quality. It is also capable of 4K upscaling and dual decoding two 1080p60 videos at once. All models include Gigabit Ethernet and offer a hardware-accelerated HTML5 engine with advanced performance.



### BrightSign XD234

#### Standard I/O Player

Offers video decoding of one 4Kp60 video or two Full HD videos simultaneously and supports Dolby Vision and HDR10+ content. It includes the standard I/O package of Gigabit Ethernet, GPIO, IR, analog/digital audio, and an M.2 SSD PCIe interface.



### BrightSign XD1034

#### Expanded I/O Player

Includes all the features BrightSign XD234 plus additional interactive options with the added serial and dual USB 2.0 (type A and C) ports for engaging interactive displays.

## Features



4K60p single decode



Dolby Vision



HDR10+



1080p60 dual decode



H.265



Advanced HTML5



IP Streaming



BrightBeacon™



BrightWall™



AutoWall™



Zones



Interactive



Live Feeds



Geo-Fencing



Tagging



BrightSign App



Sign Preview



Remote Snapshot



B-Deploy



Digital Audio



Mosaic Mode



M.2 SSD PCIe Interface

\*\* HDR10+ functionality is planned to be released in 2019 on Series 4 players but is currently not available.

## SPECIFICATIONS

MODEL	XD234	XD1034
VIDEO ENGINE DECODER		
Native 4K@60p Dolby Vision and HDR10+ video decoding	X	X
Single video decoding: 4K or 1080p60	X	X
Dual video decoding: 1080p60	X	X
MEDIA FORMATS		
Video Codecs for 4K content: H.265/H.264	X	X
Video Containers for 4K H.265/H.264 content: .ts, .mov, .mp4, .mkv	X	X
Video Codecs for Full HD: H.265, H.264 (MPEG-4 Part 10), MPEG-2	X	X
Video Containers for Full HD content: .ts, .mpg, .vob, .mov, .mp4, .m2ts	X	X
Image support BMP, JPEG, PNG	X	X
Audio: MP2, MP3, AAC, and WAV (AC3 is passed through)	X	X
HTML5	X (Advanced)	
DISPLAY RESOLUTIONS*		
4K resolutions: 4096x2160, 3840x2160, 3840x600	X	X
Upscaling to: 3840x2160x24/25/29.97/30p	X	X
1920x1080, 1920x1200, 1600x1200, 1440x1050, 1440x900, 1360x768, 1280x1024, 1280x960, 1280x800, 1280x768, 1280x720, 1024x768, 800x600, 720x576, 720x480, 640x480	X	X
HARDWARE INTERFACES		
Locking Power Connector	X	X
External micro SD Slot (SDHC and SDXC); SDHC storage up to 32GB SDXC storage up to 2TB	X	X
M.2 SSD PCIe Interface	X	X
USB High Speed Host Port (also supports content updates)	X (2 ports: Type A&C)	
12-pin Phoenix GPIO port with 8 bi-directional GPIOs	X	X
3.5mm RS-232 Serial Port		X
3.5mm IR In/Out	X	X
3.5mm Audio Out (analog -or- SPDIF digital, non-simultaneous)	X	X
HDMI 2.0a Out	X	X
Ethernet	X (Gigabit)	
M.2 (E) Keyed Wi-Fi/Bluetooth Connector	X	X
Wi-Fi External Antenna Connector	X	X
Status LEDs	Power, Busy, Wireless, Error	
Reset and Service Buttons	X	X
Real Time Clock	X	X
FEATURES		
H.265 Decoding: smaller file sizes and higher quality content than H.264	X	X
Native 4K Dolby Vision and HDR10+ decoding, 4K upscaling, dual 1080p video decoding	X	X
HTML5: hardware-accelerated HTML5 engine plays full screen and modular HTML5 assets up to 4K resolution layered together with high-bandwidth Full HD or 4K video	X (Advanced)	

MODEL	XD234	XD1034
BrightBeacon™: 2-way Bluetooth/Beacon communication between mobile devices & signage (requires: wireless/Bluetooth module)	X	X
BrightWall™: frame-accurate synchronized playback across multiple displays	X	X
Autowall™: embraces the power of HTML5 to create unique multimedia video walls	X	X
Zones: playback multiple content types on a single screen	X	X
Mosaic Mode: simultaneously play a multitude of smaller resolution videos that add up to the maximum video resolution of the player	X	X
IP Streaming: play streaming media	X	X
Interactivity: connect virtually any type of interactive device to a multitude of interactive ports	X (GPIO, IR, UDP)	X (GPIO, dual USB, serial, IR, UDP)
Live Feeds: Live Data, Live Text, MRSS, Twitter, Flickr, etc.	X	X
Tagging: BrightSign Network users can assign media and player tags for highly targeted content distribution	X	X
BrightSign App: update signs with an iOS device	X	X
Geo-Fencing: trigger playback based on location (requires USB dongle)		X
Sign Preview: preview presentation playback in BrightAuthor	X	X
Remote Snapshot: remotely view a snapshot image of the display's playback	X	X
Networking: update, manage and schedule your signage	X	X
B-deploy: A setup feature to deploy many players at once	X	X
Extended Thermal: Supports ambient temperatures between 0° & 70° C at 90% max relative humidity, non-condensing	X	X
<b>SOFTWARE</b>		
Free BrightAuthor Software	X	X
BrightSign Networking Options	X	X
<b>ACCESSORIES</b>		
USB Button Pads		X
Wireless/Bluetooth Module	X	X
MicroSD Class 10 Cards (various capacities)	X	X
<b>MISCELLANEOUS</b>		
Dimensions (W x H x D)	179.9 x 21.9 x 204.2mm or 7.1 x 0.86 x 8 in	
Weight	20 oz	
Power	12V / 3A (36 Watts)	
Multi-Country Power & Regulatory Approvals	X	X
Built-in Wall Mounting Brackets	X	X
1 year warranty, parts and labor	X	X

# BRIGHTSIGN XT

## STATE-OF-THE-ART TECHNOLOGY AND DOLBY VISION™. ENTERPRISE PERFORMANCE.

BrightSign XT delivers unsurpassed performance for enterprise applications with a powerful 4K video engine, our fastest HTML and graphics engine and our most powerful CPU. This state-of-the-art technology for leading-edge digital signage installations supports H.264 & H.265 decoding, Dolby Vision and HDR10+\*\* media profiles, Full HD and 4K playback including Mosaic Mode. It offers a hardware-accelerated HTML5 rendering engine that enables flawless playback of multiple modular HTML5 assets including Javascript, CSS animations, WebGL and even swipe/gesture interactivity. All XT models offer Gigabit Ethernet, and XT is the only product line offering dual 4K video decoding, 4K full resolution graphics, PoE+ as well as HDMI In for Live TV playback.



### BrightSign XT244

#### Standard I/O Player

Offers our most powerful H.264/H.265 4K & Full HD video engine with Dolby Vision and HDR10+ support, 4K full resolution graphics, 4K upscaling and dual decoding of two 4Kp60 videos simultaneously. Delivers the best HTML5 rendering performance available for Enterprise applications. Includes the standard I/O package of Gigabit Ethernet with PoE+, GPIO, IR, analog/digital audio and an M.2 SSD PCIe interface.



### BrightSign XT1144

#### Expanded I/O Player

Includes all the features BrightSign XT244, plus serial, dual USB (type A and C) and Live TV playback via the HDMI 2.0a input to play content from any broadcast channel – even protected HDCP content.



## Features



4Kp60  
dual decode



4K Graphics



Dolby Vision



HDR10+



H.265



Power over  
Ethernet



Live TV



Enterprise  
HTML5



IP Streaming



BrightBeacon™



BrightWall™



AutoWall™



Zones



Interactive



Live Feeds



Geo-Fencing



Tagging



BrightSign App



Sign Preview



Remote Snapshot



B-Deploy



Digital Audio



Mosaic  
Mode



M.2 SSD PCIe  
Interface

\*\* HDR10+ functionality is planned to be released in 2019 on Series 4 players but is currently not available.

## SPECIFICATIONS

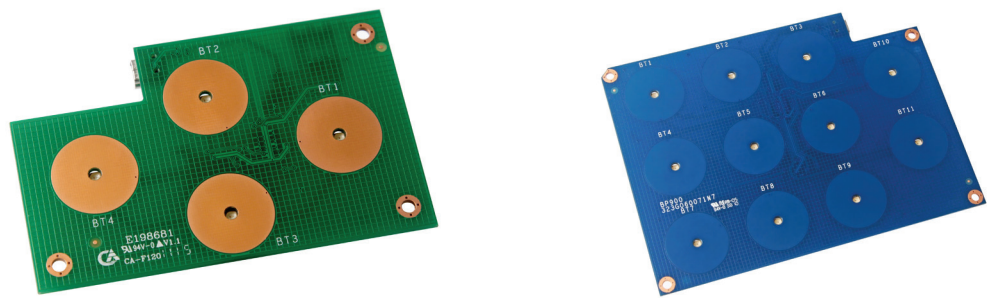
MODEL	XT244	XT1144
VIDEO ENGINE DECODER		
Native 4K@60p Dolby Vision and HDR10+ video decoding	X	X
Single video decoding: 4K or 1080p60	X	X
Dual video decoding: 4K or 1080p60	X	X
MEDIA FORMATS		
4K full resolution graphics	X	X
Video Codecs for 4K content: H.265/H.264	X	X
Video Containers for 4K H.265 content: .ts, .mov, .mp4, .mkv	X	X
Video Codecs for Full HD: H.265, H.264 (MPEG-4 Part 10), MPEG-2	X	X
Video Containers for Full HD content: .ts, .mpg, .vob, .mov, .mp4, .m2ts	X	X
Image support up to 4K BMP, JPEG, PNG	X	X
Audio: MP2, MP3, AAC, and WAV (AC3 is passed through)	X	X
HTML5	X (Enterprise)	
DISPLAY RESOLUTIONS*		
4K resolutions: 4096x2160, 3840x2160, 3840x600	X	X
Upscaling to: 3840x2160x24/25/29.97/30p	X	X
1920x1080, 1920x1200, 1600x1200, 1440x1050, 1440x900, 1360x768, 1280x1024, 1280x960, 1280x800, 1280x768, 1280x720, 1024x768, 800x600, 720x576, 720x480, 640x480	X	X
HARDWARE INTERFACES		
Locking Power Connector	X	X
External micro SD Slot (SDHC and SDXC); SDHC storage up to 32GB SDXC storage up to 2TB	X	X
M.2 SSD PCIe Interface	X	X
USB High Speed Host Port (also supports content updates)	X (2 ports: Type A&C)	
12-pin Phoenix GPIO port with 8 bi-directional GPIOs	X	X
3.5mm RS-232 Serial Port		X
3.5mm IR In/Out	X	X
3.5mm Audio Out (analog -or- SPDIF digital, non-simultaneous)	X	X
HDMI 2.0a Out	X	X
HDMI 2.0a Input		X
Ethernet	X (Gigabit)	
Power over Ethernet (PoE+)	X	X
M.2 (E) Keyed Wi-Fi/Bluetooth Connector	X	X
Wi-Fi External Antenna Connector	X	X
Status LEDs	Power, Busy, Wireless, Error	
Reset Button	X	X
Real Time Clock	X	X
FEATURES		
H.265 Decoding: smaller file sizes and higher quality content than H.264	X	X
Native 4K Dolby Vision and HDR10+ decoding, 4K upscaling, dual 4K video decoding and 4K graphics	X	X

MODEL	XT244	XT1144
Live TV: brings Live TV, even HDCP-protected content, to your signage via HDMI 2.0a Input		X
HTML5: hardware-accelerated HTML5 engine plays full screen and modular HTML5 assets up to 4K resolution layered together with high-bandwidth Full HD or 4K video	X (Enterprise)	
BrightBeacon™: 2-way Bluetooth/Beacon communication between mobile devices & signage (requires: wireless/Bluetooth module)	X	X
BrightWall™: frame-accurate synchronized playback across multiple displays	X	X
Autowall™: embraces the power of HTML5 to create unique multimedia video walls	X	X
Zones: playback multiple content types on a single screen	X	X
Mosaic Mode: play a multitude of smaller resolution videos simultaneously that add up to the maximum video resolution of the player	X	X
IP Streaming: play streaming media	X	X
Interactivity: connect virtually any type of interactive device to a multitude of interactive ports	X (GPIO, IR, UDP)	X (GPIO, dual USB, serial, IR, UDP)
Live Feeds: Live Data, Live Text, MRSS, Twitter, Flickr, etc.	X	X
Tagging: BrightSign Network users can assign media and player tags for highly targeted content distribution	X	X
BrightSign App: update signs with an iOS device	X	X
Geo-Fencing: trigger playback based on location (requires USB dongle)		X
Sign Preview: preview presentation playback in BrightAuthor	X	X
Remote Snapshot: remotely view a snapshot image of the display's playback	X	X
Networking: update, manage and schedule your signage	X	X
B-deploy: A setup feature to deploy many players at once	X	X
Extended Thermal: Supports ambient temperatures between 0° & 70° C at 90% max relative humidity, non-condensing	X	X
<b>SOFTWARE</b>		
Free BrightAuthor Software	X	X
BrightSign Networking Options	X	X
<b>ACCESSORIES</b>		
USB Button Pads		X
Wireless/Bluetooth Module	X	X
MicroSD Class 10 Cards (various capacities)	X	X
<b>MISCELLANEOUS</b>		
Dimensions (W x H x D)	179.9 x 21.9 x 204.2mm or 7.1 x 0.86 x 8 in	
Weight	20 oz	
Power	12V / 3A (36 Watts)	
Multi-Country Power & Regulatory Approvals	X	X
Built-in Wall Mounting Brackets	X	X
1 year warranty, parts and labor	X	X

# BRIGHTSIGN BUTTON PANEL

## USB BUTTON PANEL FOR INTERACTIVE SIGNAGE

BrightSign’s USB Button Panels easily adds interactivity to your digital signage. There are two button panels to choose from depending on the number of controls required, and both offer capacitive touch controls and LED lighting at the center of each button. The button panel and LED operations are simple to program using our free BrightAuthor software. The thin board design is easily integrated into custom displays and enclosures with graphics overlays to create the look you need.



### Features

- Capacitive touch controls including red LED lighting for each button
- Connects to and is powered by the USB port (USB cable not included)
- Easily to program button and LED operations using BrightAuthor
- Thin board design easily integrated into enclosures and displays
- 2 models available: 4 Button (BP200), 11 Button (BP900)

### Specifications

Features	BP200	BP900
Capacitive touch buttons	4	11
Red LED lights	4	11
Dimensions	101.6 mm (W) x 63.5 mm (D) x 11.1 mm (H) 4.0" (W) x 2.5" (D) x .44" (H)	139.7 mm (W) x 101.6 mm (D) x 11.1 mm (H) 5.5" (W) x 4.0" (D) x .44" (H)
Weight	46 grams or 1.62 oz	46 grams or 1.62 oz
Compatible BrightSign players	Any BrightSign model that has a USB port	
Connection	USB (cable not included)	